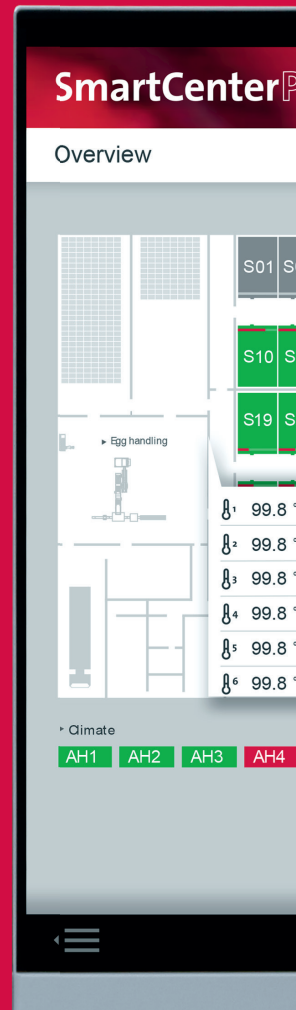
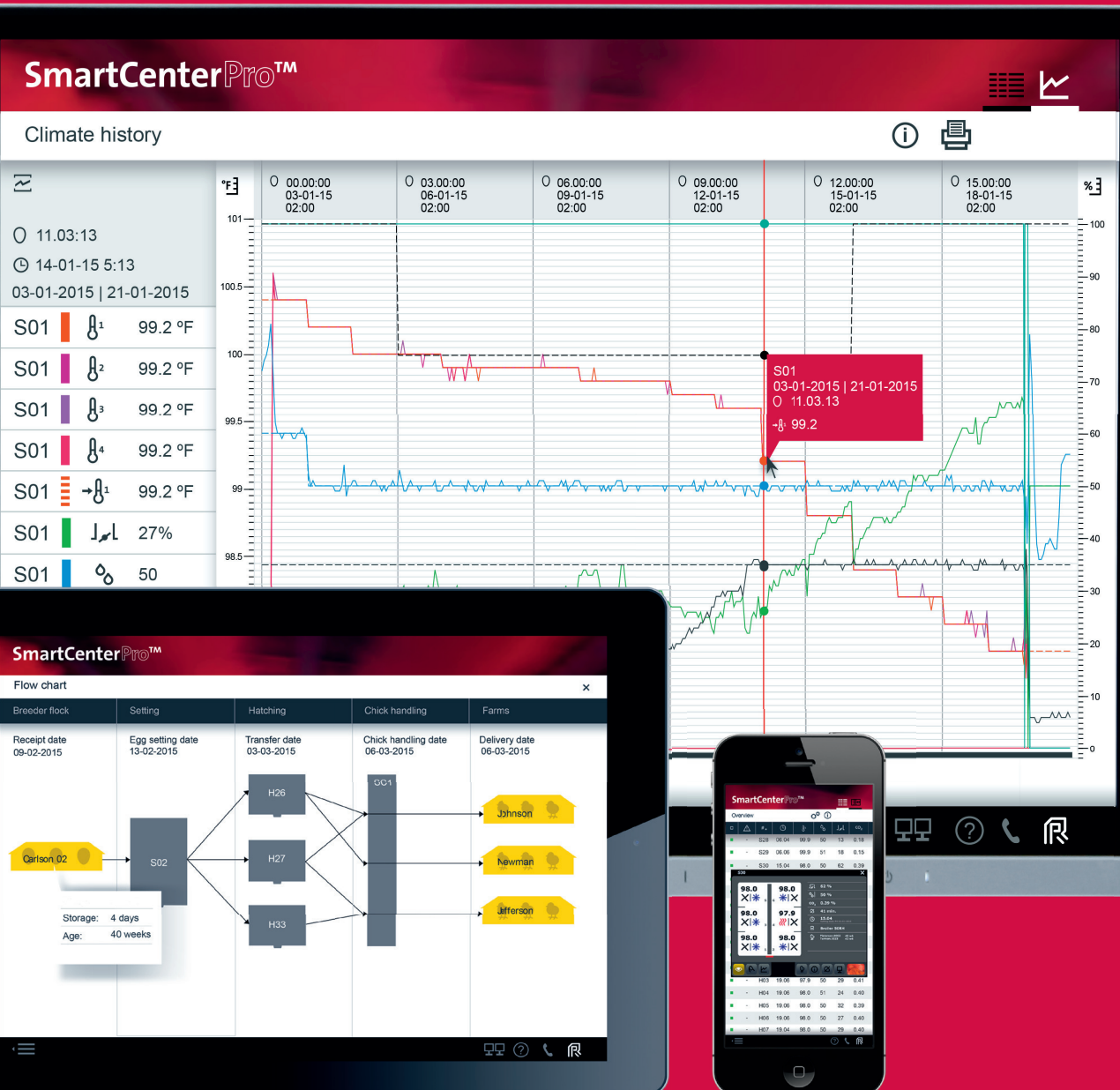


SmartCenterPro™

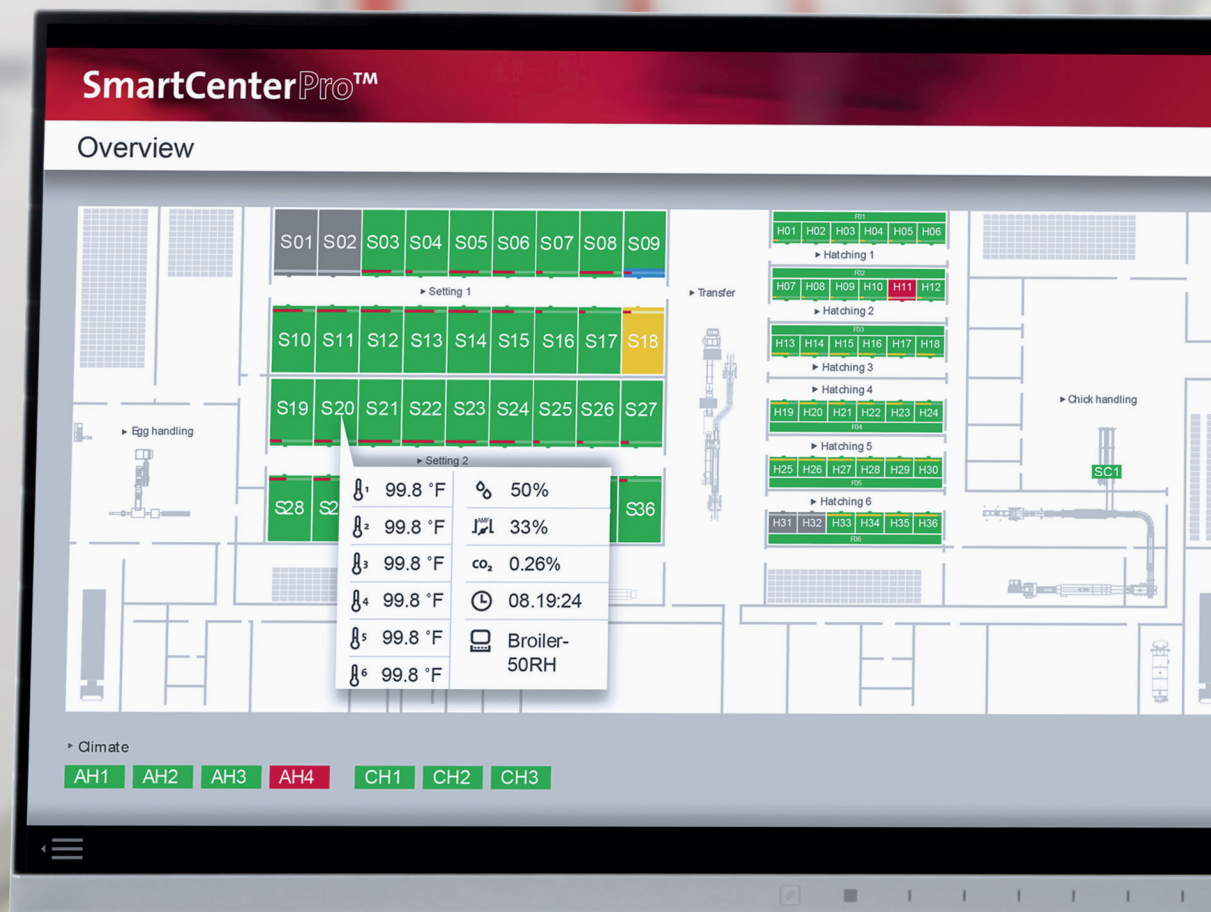
Informed decision-making in the modern hatchery

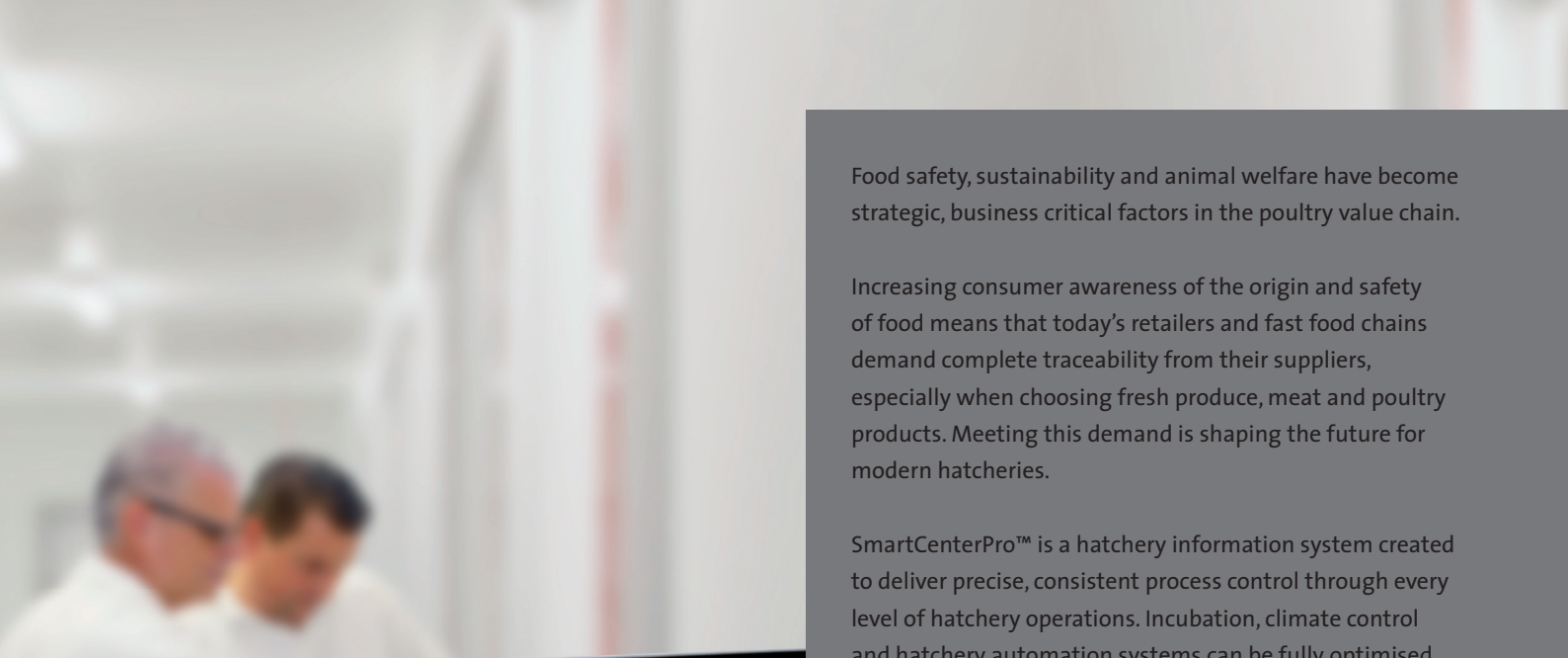


Pas Reform
Hatchery Technologies



Complete data capture for total hatchery control



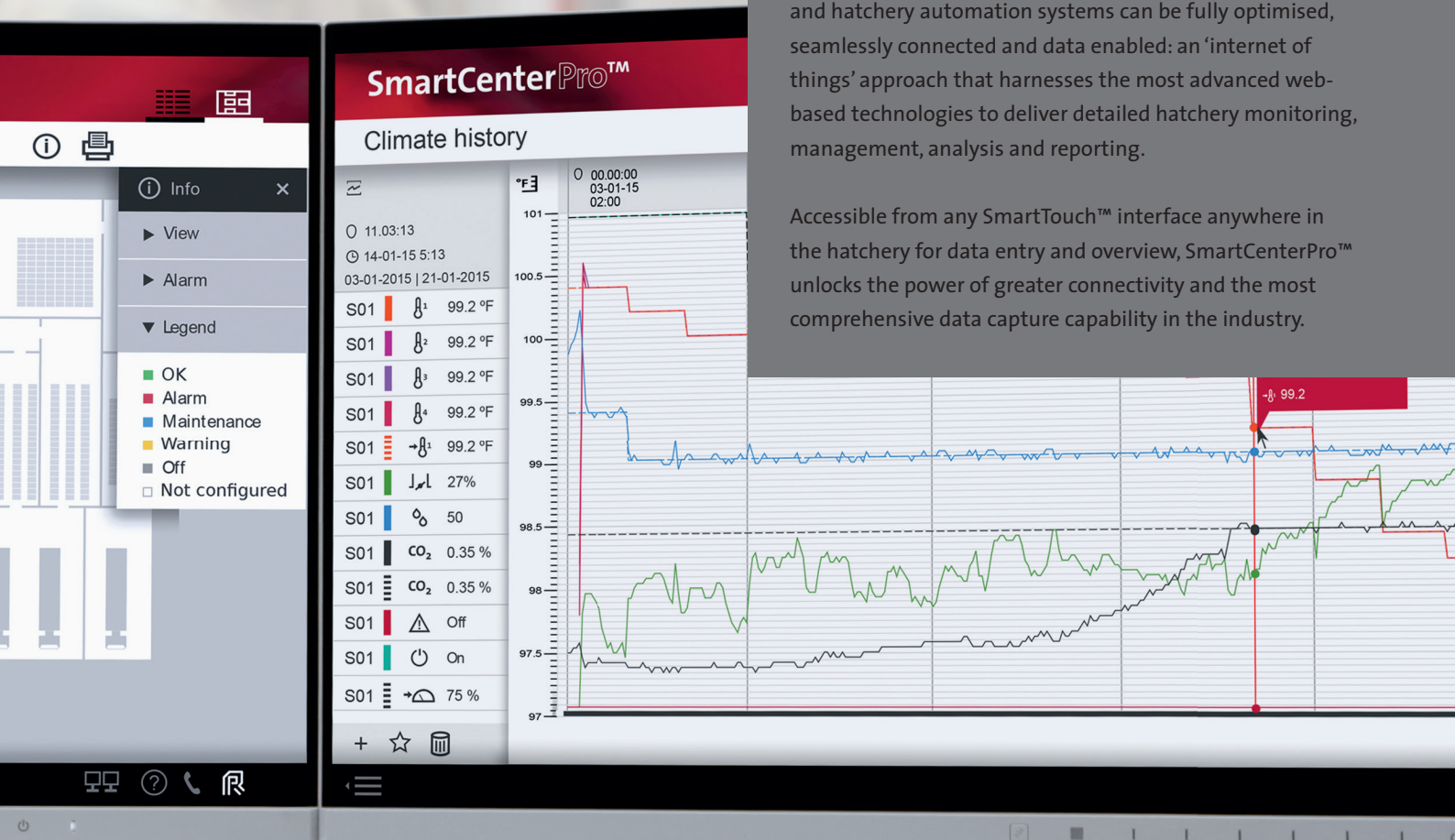


Food safety, sustainability and animal welfare have become strategic, business critical factors in the poultry value chain.

Increasing consumer awareness of the origin and safety of food means that today's retailers and fast food chains demand complete traceability from their suppliers, especially when choosing fresh produce, meat and poultry products. Meeting this demand is shaping the future for modern hatcheries.

SmartCenterPro™ is a hatchery information system created to deliver precise, consistent process control through every level of hatchery operations. Incubation, climate control and hatchery automation systems can be fully optimised, seamlessly connected and data enabled: an 'internet of things' approach that harnesses the most advanced web-based technologies to deliver detailed hatchery monitoring, management, analysis and reporting.

Accessible from any SmartTouch™ interface anywhere in the hatchery for data entry and overview, SmartCenterPro™ unlocks the power of greater connectivity and the most comprehensive data capture capability in the industry.





Making powerful connections

Incubation, automation and climate control in one network

All SmartCenterPro™ functions are available in three main programme tiers: Hatchery Overview, Hatchery Management and Hatchery Analysis.

Hatchery Overview

At the heart of SmartCenterPro™ a fully interactive floor plan, uniquely customised to each individual hatchery, shows the current status in every area of operations, including alarms and maintenance, in a single screen view.

Essential functions and parameters for each incubator, climate control and hatchery automation system connected to SmartCenterPro™ can be accessed and managed from this main overview screen, which switches easily to list view for sorting data.

Scroll over any connected device in the hatchery and a tooltip reveals current operating parameters, while a progress bar for each incubator gives an immediate indication of time to egg transfer or chick take-off.

‘Zoom the room’ for detailed information from connected devices in each area of the hatchery. One click accesses a full status screen for that area, with the ability to monitor and control corresponding systems, from incubator set points and the origin of the eggs, to a chick counter in operation or the pressure in a fluff tunnel.

Hatchery Management

Incubation Programming

A detailed database supplied by Pas Reform Academy is included with SmartCenterPro™, ready-populated with default incubation profiles for layer, broiler, duck or turkey eggs. From this base data, unlimited numbers of breed-, age- and storage specific incubation profiles can be added, tailored to specific local circumstances and experience.

Practical and simple-to-use, SmartCenterPro™ enables the hatchery manager to optimise chick quality and uniformity by fine-tuning temperature, humidity, CO₂, Vortex™ speed and turning conditions for each specific incubation programme. Any number of individual programmes, including specific pre-heating, Circadian Incubation™ or SPIDES profile settings, can be used simultaneously in separate incubators to create the ideal environment for each specific batch of eggs.

The full list of incubation programmes can be viewed, maintained, sent, modified, imported, exported and edited in a single programme, for total flexibility and user friendliness.

Alarms

A fully integrated, advanced redundant alarm module means that with SmartCenterPro™ in operation, there is no need for additional alarm systems. A modem, UPS package with back-up battery and a Mod-alarm for additional redundancy are also included.

Alarms automatically detect unscheduled changes to temperature, humidity, valve position, CO₂ levels, Vortex™ speed, turning or power loss in setters and hatchers. The system also monitors air handling units, chillers and fluff tunnels during incubation.



SmartCenterPro™ is supplied with additional digital inputs that can be configured to other devices.

Once an alarm is triggered, automated voice dialling contacts a designated staff group with a pre-recorded, alarm-specific, own-language voice message until the call is answered. Entering a pin code to acknowledge receipt of the call stops the automated dialler.

The responding staff member need only access the SmartCenterPro™ overview screen, to identify the alarm source and take the necessary action.

Any equipment failure or programme deviation can be rapidly identified and resolved from any SmartCenterPro™ interface, either in the hatchery or remotely.

Maintenance

The SmartCenterPro™ maintenance module actively contributes to operational reliability and greater productivity, providing all the tools to implement a preventive hatchery maintenance programme.

From incubators and auxiliary systems, to climate control and hatchery automation, unlimited hatchery maintenance or service-orientated tasks can be scheduled into the system.

Each task becomes clearly visible in the hatchery overview screen when it is due. When a task is logged as completed, SmartCenterPro™ calculates the interval to the next due date automatically, to provide a fully updated weekly task list, with reminders for action by the hatchery's maintenance team.

Links to technical support manuals are provided for every predefined task, with easy connection to Pas Reform's spare parts and ordering system for parts supply.

Egg-to-chick traceability with minimal data entry

SmartCenterPro™ delivers detailed reports from every connected hatchery process, with minimal data input.

For every breeder flock taken into production, details of flock name, age and breed are quickly added to the system using easily navigable drop-down menus. Once added, SmartCenterPro™ remembers every piece of information attached to that flock, calculating maternal age with each batch of eggs received, to provide accurate programming information for every hatch cycle.

Using an incubator's individual SmartTouch™ interface, the origin of the eggs is selected from a predefined list when loading the setter.

When the eggs are transferred to the hatcher, their origin and originating setter number are selected using the hatcher's SmartTouch™ interface. The hatcher knows which flock and setter the eggs originated from with a seamless transition that ensures full egg to chick traceability.



Enter data easily using the incubator's SmartTouch™ interface

SmartCenterPro™ also tracks all the farms that chicks are sent to, in a list that contains all hatchery client names, farms and respective farm houses. Chicks from a specific hatcher are allocated to their respective farms.



Intelligent data capture for informed decision-making

Hatchery Analysis

Powerful, simple-to-use data analysis tools are incorporated into SmartCenterPro™, to make light work of optimising performance while building a detailed historical database that charts every process and event in day to day operations - and can easily be exported to Excel format.

Integrated data from incubation, climate control and hatchery automation systems produces a unique 'cycle report' for every batch of eggs, including full traceability information with details of chick uniformity, setter and hatcher climate, hatchery climate and alarms.

The Analysis module also provides access to trouble-shooting diagnostics, while building a knowledge base. This enables the hatchery manager to make well-informed decisions for the future refinement and development of incubation programming, hatchery management and maintenance schedules.

This unparalleled visibility, from egg receipt to the on-farm delivery of the day old chicks, through track & trace, alarm and climate, to incubation programming, maintenance and user history, supports the hatchery to meet the traceability demands of its customers.



Dual monitor functionality provides a clear, uninterrupted view: run two screens from a single computer to show separate functions side by side, monitor the effect of changes or compare data.



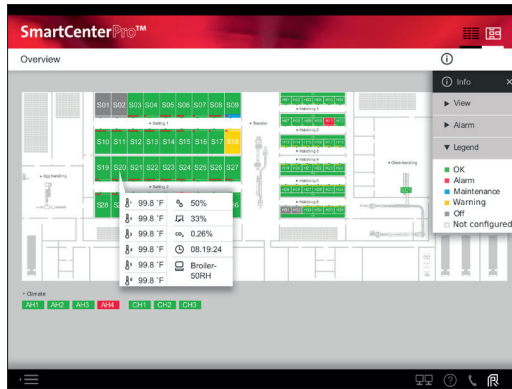
Track & Trace

Batch-specific database-building

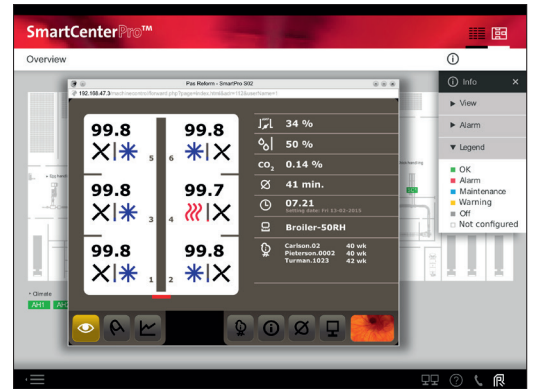
SmartCenterPro™ delivers the most comprehensive and detailed Track & Trace capability available. From the origin of the hatching eggs at the breeder farm, to the receipt of the day old chicks by the customer's farm, SmartCenterPro™ makes short work of charting, refining and reporting on every event in the hatchery journey.



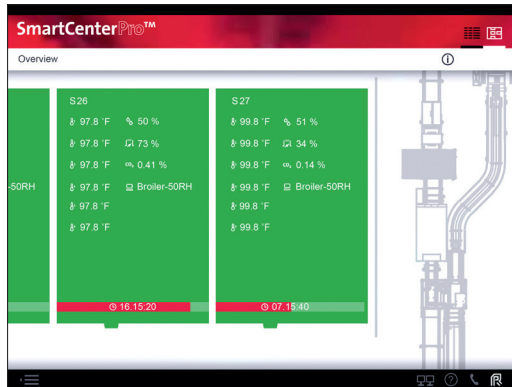
Fully interactive, hatchery-specific floor plan



Monitor and control incubation settings



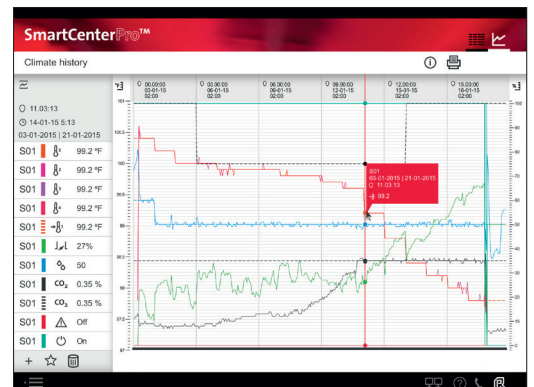
'Zoom the room' for detailed operating parameters



Monitor and control chick counting



Climate reports charted in easy-to-read graphs



Smart connectivity in the modern hatchery

Three main program tiers for rapid access to SmartCenterPro™'s complete information system:

Hatchery Overview

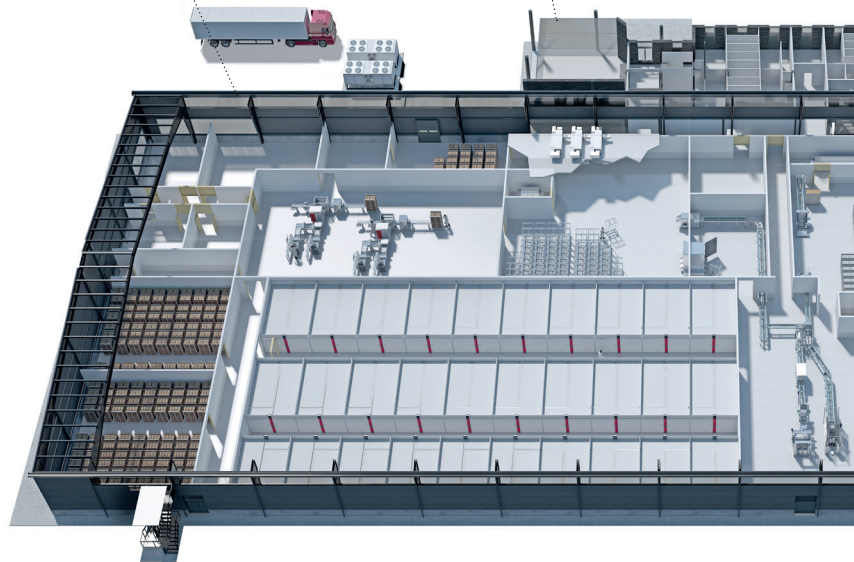
- Continuously monitor incubators, hatchery automation and climate control systems
- Fine-tune settings for optimum incubation conditions at all times

Hatchery Management

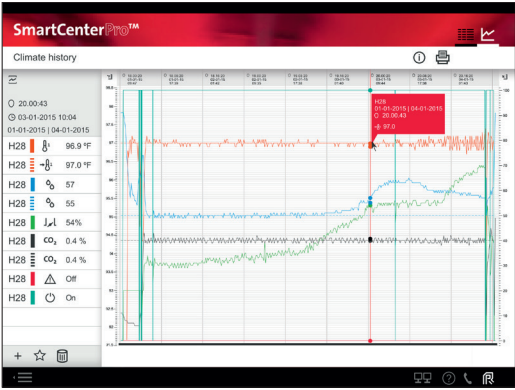
- Manage key functions from track & trace, alarm management and maintenance to breed specific incubation programming

Hatchery Analysis

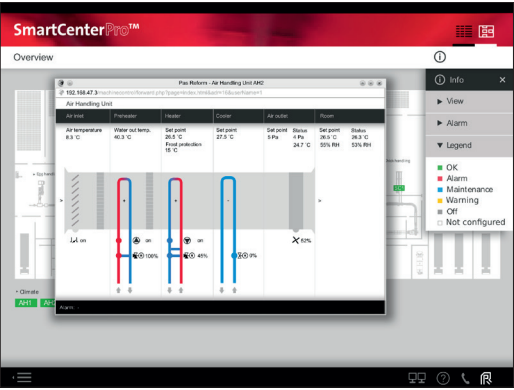
- Chart every process and event in day to day operations
- Produce real time management reports for batch-specific analysis and decision-making



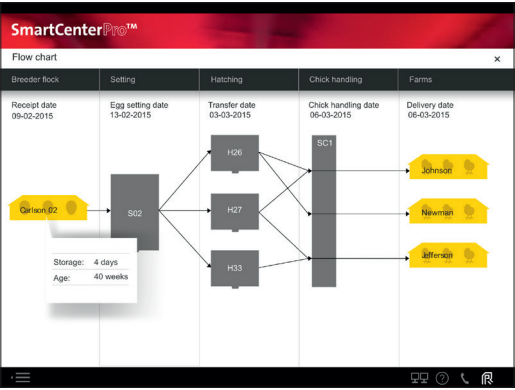
Hatch window recorded in easy-to-read graphs



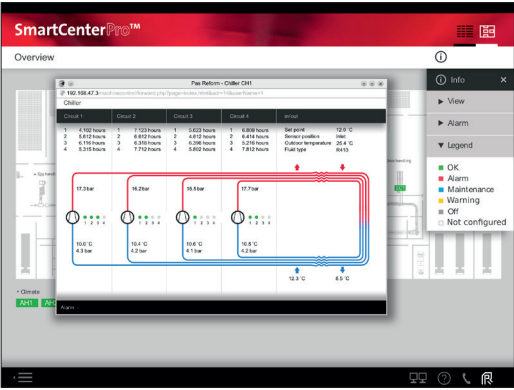
Air handling unit control system



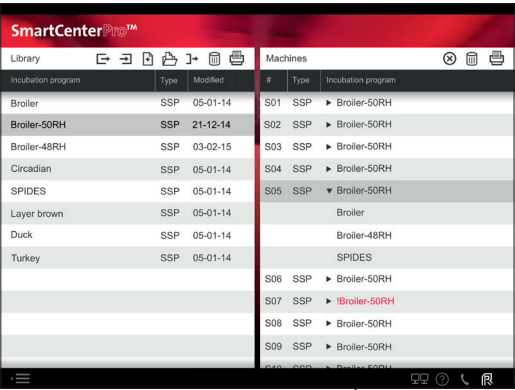
Batch-specific traceability information



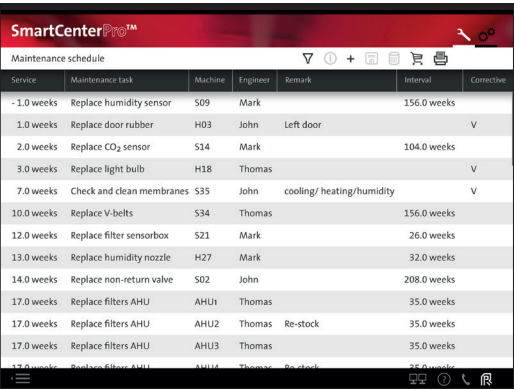
Chilled water system control



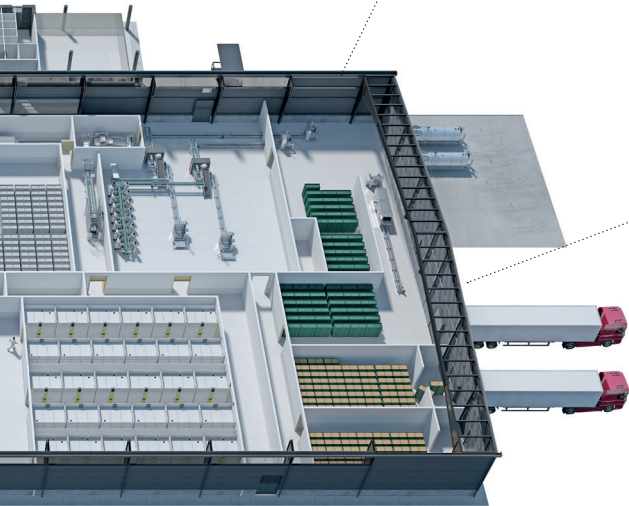
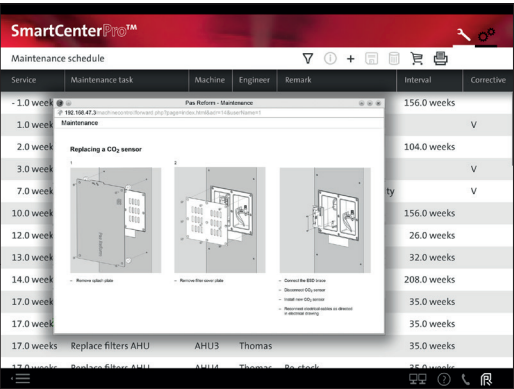
Database with flexible incubation programmes



Maintenance-management programmes

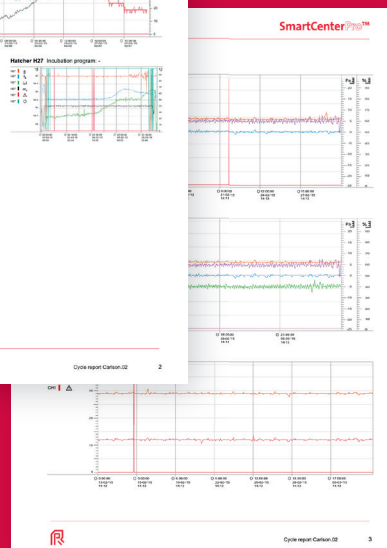
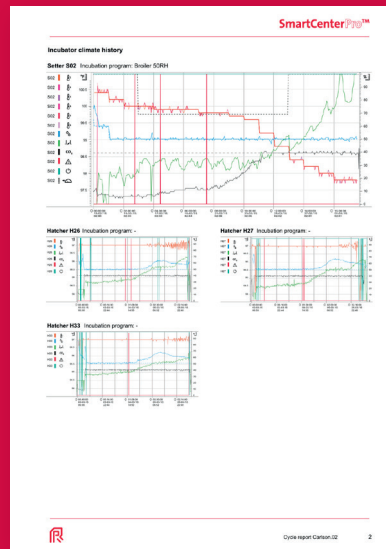
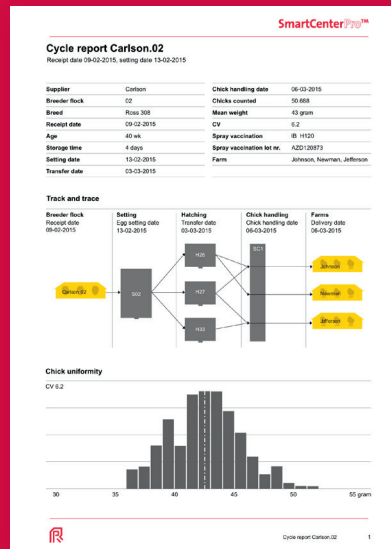


Technical support manuals



Unparalleled data insights from every area of hatchery operations

Every egg-to-chick journey and hatchery process, from the receipt of hatching eggs to sending the day old chicks to the farm, culminates in a unique cycle report, containing batch specific information on traceability, chick uniformity, setter and hatcher climate, hatchery climate and alarms.



SmartCenterPro™

Description
1 Temperature high sector 5
5 Temperature high sector 5
6 Humidity high
3 Temperature low sector 1
2 Door open
3 Blue-gem stop
2 Door open
5 Door closed
5 Door closed
6 Pressure low
2 Pressure low
6 Temperature high
4 CO2 high

Report: Chiller alarms from 15-02-15 14:15 to 06-03-15 16:17

Chillers	Begin alarm	End alarm	Description
CH1	16-02-2015 18:30	16-02-2015 08:04	Outdoor temperature sensor fault



Pas Reform
Hatchery Technologies

Pas Reform
P.O. Box 2
7038 ZG Zeddam
The Netherlands

Phone +31 314 659 111
Fax +31 314 652 575
E-mail info@pasreform.com
Internet www.pasreform.com



www.twitter.com/pasreform
www.linkedin.com/company/pas-reform-hatchery-technologies
www.youtube.com/pasreformbv
www.flickr.com/pasreform